

HDMI to SDI + Audio Converter

Convert & Scale HDMI to SDI



- Video Input: HDMI, DVI
- Audio Sources: HDMI embedded (up to eight channels)
Balanced analog (single stereo pair)
Balanced digital AES (single stereo pair)
- Video Output: SD-SDI (SMPTE 259M-C)
HD-SDI (SMPTE 292)
3G (SMPTE 424M, 425 Level A and B)
- Audio Outputs: SDI embedded (up to 8 channels)
- Optical Output: Compatible with Thinklogical's SDIXtreme 3G+ Receivers
- Front Panel LCD with encoder knob
- User control via front panel, RS-232, and Ethernet
- Automatic video input detection
- Genlock capable

Convert and Scale HDMI to SD, HD, or 3G SDI

The Thinklogical HDMI to SDI Converter allows you to seamlessly convert an HDMI or DVI signal to a broadcast quality SDI signal. The HDMI to SDI Converter is fully SMPTE compliant, and includes a genlock input. User interface options include a front panel LCD and encoder, and remote control via the serial port (RS-232) and Ethernet port. Audio inputs include HDMI embedded (up to eight channels), digital AES (single stereo pair) and balanced analog (single stereo pair). Audio outputs include SDI embedded (up to 8 channels). The HDMI to SDI Converter also has a fiber output option that is fully compatible with our SDIXtreme 3G+ line of receivers for a comprehensive conversion and extension solution.

Not only does HDMI to SDI Converter convert and scale video signals in real-time, it also provides the highest quality images for professional audio-visual end users. Designed as a high performance video processor for post-production and broadcast applications, the HDMI to SDI Converter provides exceptional and enhanced image processing and quality. This stand-alone product allows for advanced real-time image correction and scaling, while at the same time functioning as a video converter which supports an HDMI or DVI input to an SDI output of SD/HD/3G SDI.

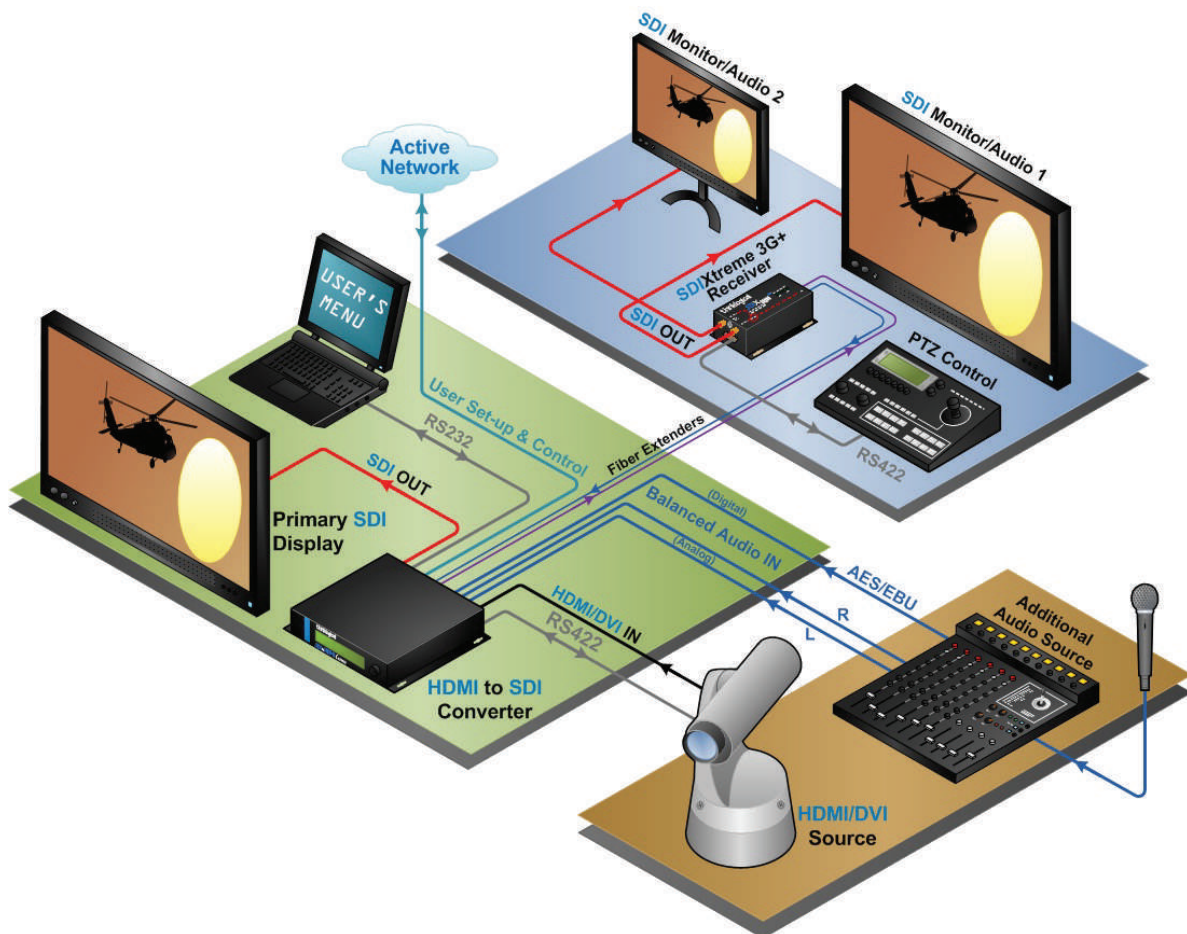
Value Your Content

thinklogical®

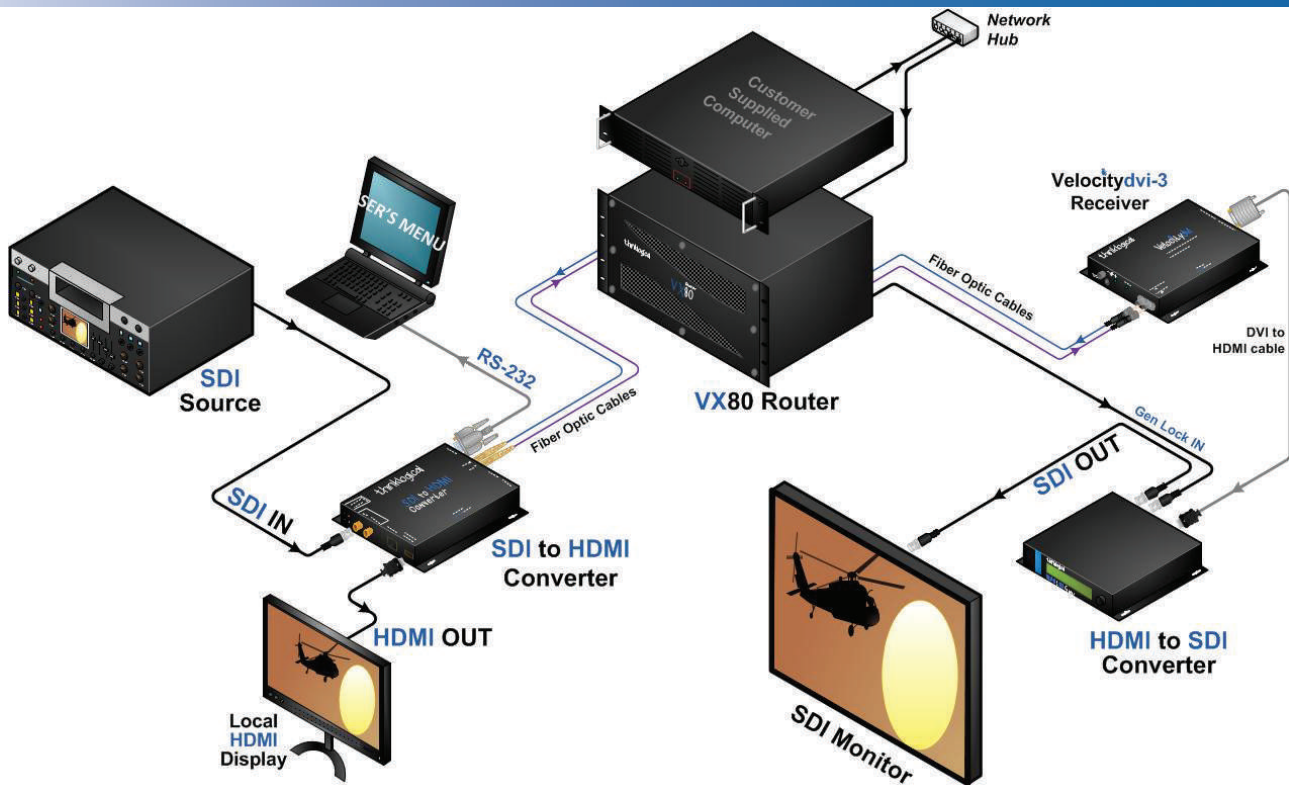
Trust Our Proven Ingenuity

Video Processor Features and Benefits:

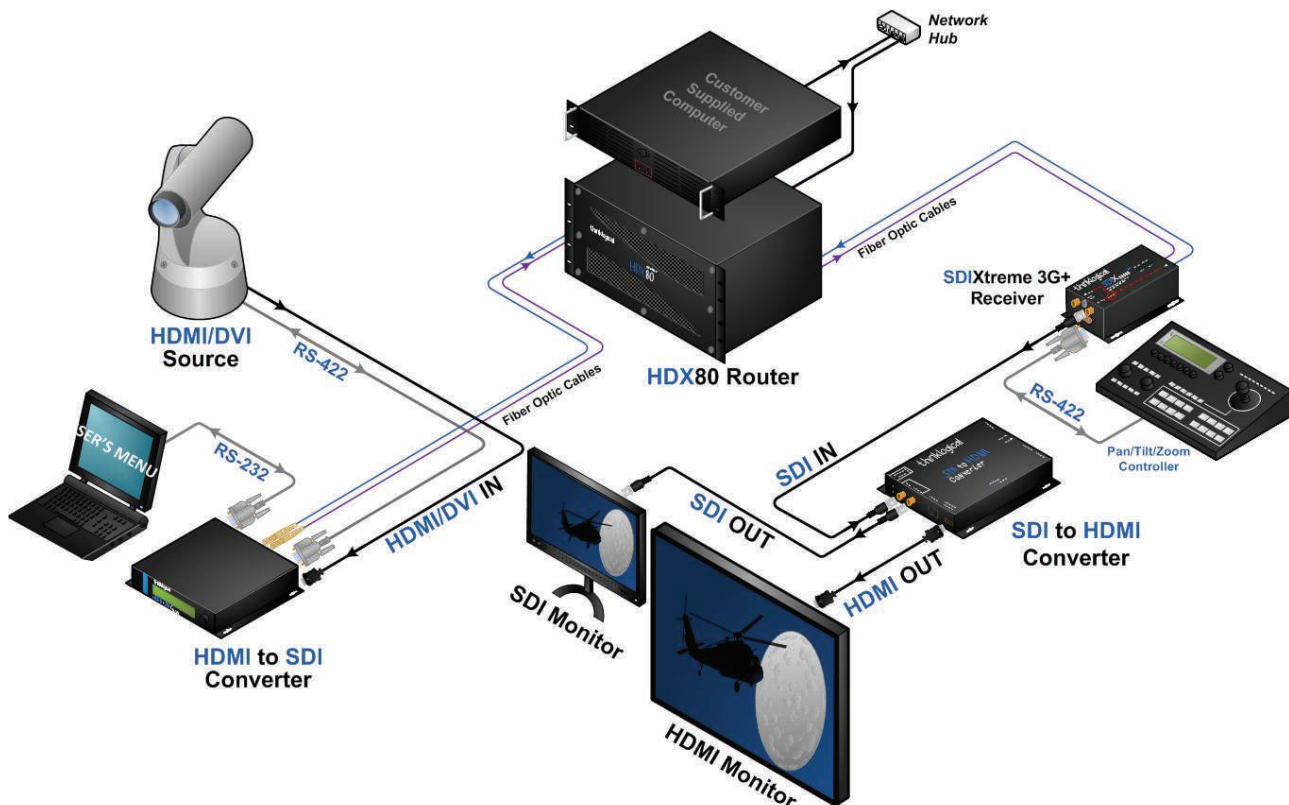
- Per-pixel motion-adaptive video noise reduction – removes the white Gaussian noise present in most types of video
- Content-adaptive block and mosquito noise reduction – significantly reduces the blocking and mosquito noise artifacts present in compressed video
- Advanced per-pixel, motion-adaptive, edge-adaptive 3D de-interlacing with support for arbitrary film cadences – removes “jaggies” and “feathering” to produce smooth and clear images
- Adaptive scaling – produces sharp and clean images at low or high resolutions
- Natural depth expansion – enhances details and sensation of depth for greater realism and super resolution effect
- Adaptive contrast enhancement (ACE) – brings out shadow detail without crushing mid-tones or highlights
- Intelligent color remapping (IRC) – enables vivid color without hue shifts and clipping while maintaining accurate flesh tone
- Qdeo™ true color – a unique solution for using the full dynamic range of 10-bit and 12-bit displays which eliminates contouring seen when viewing typical 8-bit consumer video



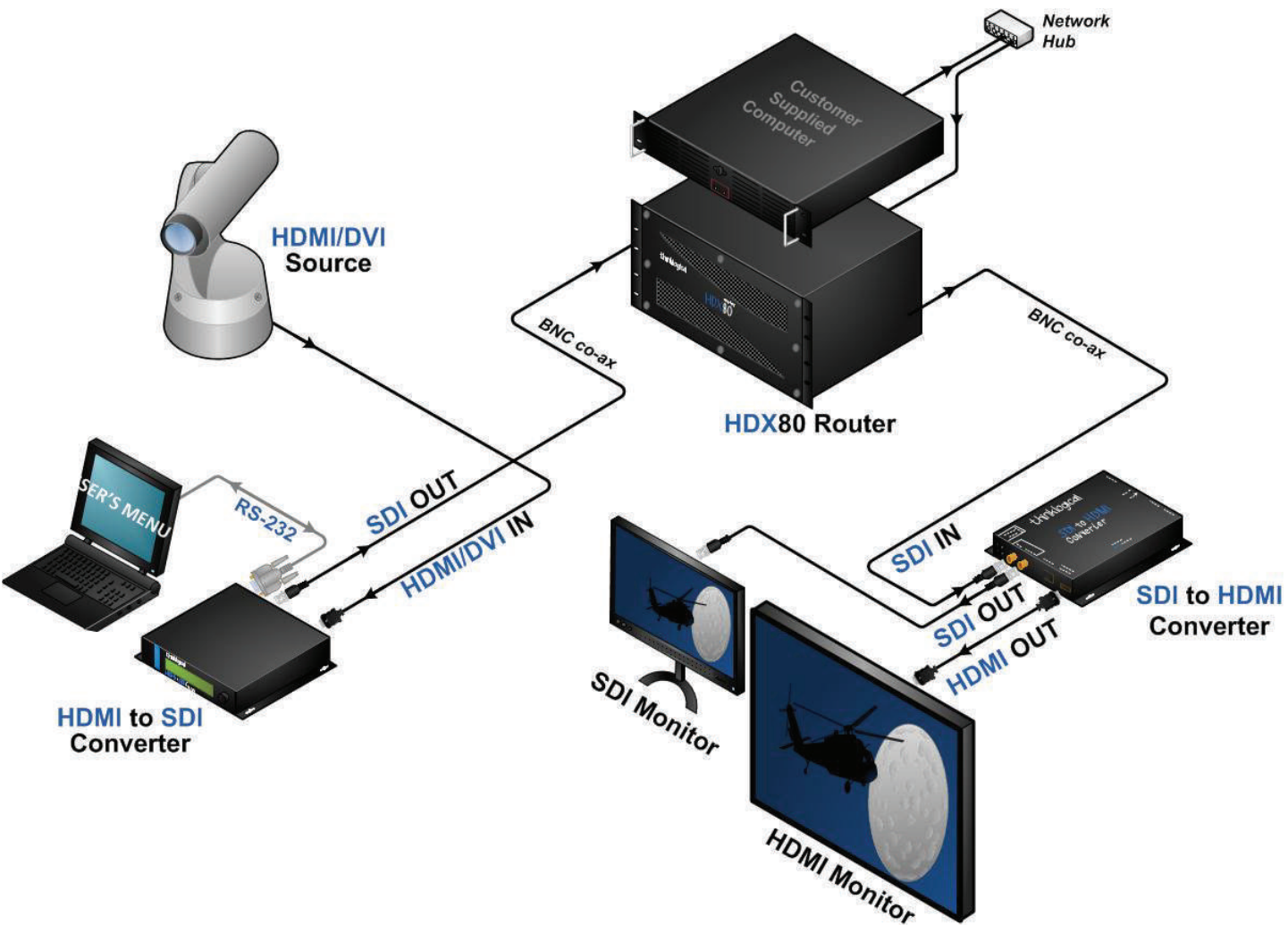
HDMI to SDI Converter Application: SDI, HDMI and Audio Source Converted and Extended via Fiber to Thinklogical's SDI Xtreme 3G+ Receiver, to SDI destination



Conversion Application Using SDI to HDMI Converter with Fiber Extension, VX80 Router, 3 AV+ Receiver, HDMI to SDI Converter



Conversion Application Using HDMI to SDI Converter with Fiber Output, HDX80 Router, SDI 3G+ Receiver, SDI to HDMI Converter



Conversion Application Using HDMI to SDI Converter with Fiber Output, HDX80 Router, SDI to HDMI Converter

Specifications

Output Frame Rate Formats Supported: Progressive, Interlaced, PsF

Function	Video Standards Supported	Formats
SD-SDI	SMPTE 259M-C	PAL and NTSC
HD-SDI	SMPTE 292M	All standard HD-SDI compatible formats
3G SDI	SMPTE 424M, 425M, Level A and B	All SMPTE 425 level A and B compatible formats

Input Video Resolution: Standard DVI and HDTV video formats

Inputs: -HDMI -Right Analog Audio (1/4" Phone Jack)
 -GENLOCK (BNC) -Left Analog Audio (1/4" Phone Jack)
 -AES Audio (1/4" Phone Jack)
 *AES and Analog Audio will operate with balanced or unbalanced sources.

Output Video Formats: 720P, 1080i, 1080Psf, 1080P (SMPTE 292M, SMPTE 424M)

Output Frame Rates: 50, 59.94, 60Hz

Outputs: -SDI (BNC)
 -Xtreme 3G+ Optical SFP

RS422 bi-directional communication available with SDIXtreme 3G+ option and 2 fibers. DTE or DCE selectable by user.

User Control Interfaces: Front Panel LCD, Front Panel Encoder Knob, RS232, Ethernet

Supply Voltage: +12.0 VDC

DC Adapter: AC/DC adapter universal input 90-264 VAC

Power Consumption: HDMI to SDI Conversion: 10 Watts
 HDMI to SDI Conversion with Xtreme 3G+ Extension: 12 Watts

Operating Temperature: 0°-50° C (32°-122° F)

Humidity: 5-95% RH, non-condensing

Dimensions:

Height: 1.5 inches (38.1 mm)

Weight: Converter: 1 lb (0.45 kg), Converter Extender: 1.5lb (0.68 kg)

Depth: 7.75 inches (196.85 mm)

Shipping Weight: 9 lbs (4.08 kg)

Width: 7.65 inches (136.65 mm)

Optical Cable: Single-Mode and Multi-Mode over one or two fibers, LC Connector
Fiber is Available, Not Supplied

Xtreme 3G+ Extension Option

Optical Distance:

Up to 50 meters using 62.5/125um, type OM1

Up to 350 meters using 50/125um, type OM2

Up to 750 meters using 50/125um, type OM3

Up to 1000 meters using 50/125um, type OM4

Up to 10 kilometers using 9/125um, type OS2 (Single-Mode)

(Please contact Thinklogical for distances over 10 kilometers)

Compliance: Approvals for US, Canada, and European Union

Warranty: 12 months from date of shipment, extended warranties also available

Ordering Information

HDC-000001 HDMI to SDI Converter

HDC-000001-LC HDMI to SDI Converter/Extender

Optics for HDMI to SDI Converter with SDIXtreme 3G+ Extension:

VOP-M19 HDC Optics Package Multit-Mode, LC

VOP-S04 HDC Optics Package Single-Mode, LC

Value Your Content

thinklogical®

Trust Our Proven Ingenuity

© 2013 Thinklogical. All rights reserved.

Thinklogical claims or other product information contained in this document are subject to change without notice. This document may not be reproduced, in whole or in part, without the express written consent of Thinklogical.

100 Washington Street
Milford, CT 06460 USA

Contact a Thinklogical Sales Representative at
sales@thinklogical.com or (203) 647-8700