

SDIXtreme^{3G+} QUICK START GUIDE

3G SDI Fiber Optic Extension

STEP 5: Install the provided +5VDC power supply to the **SDIXtreme^{3G+} Transmitter** and plug it into a standard AC source. Ensure that the **ACTIVE** LED on the Transmitter comes on. The **ACTIVE** LED will blink if no SDI input is present.

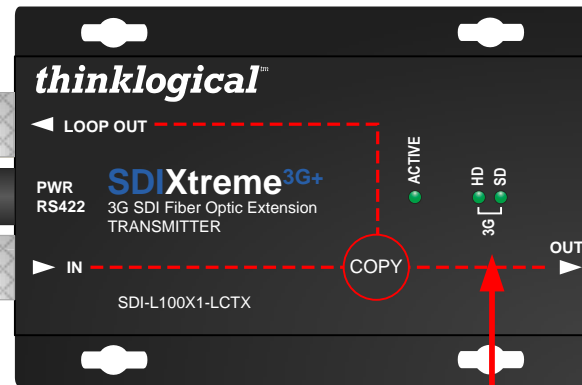
5VDC (PWR-000051-R)



3G, SD, HD SDI Loop Out

STEP 6: Connect your 3G, SD or HD SDI video source to the **SDIXtreme^{3G+} Transmitter's IN Port**. A local Monitor or other viewing device may be connected to the Transmitter's LOOP OUT port. If required, connect the device's RS422 port to the Transmitter's RS422 Port, located directly below the Power connector.

Source

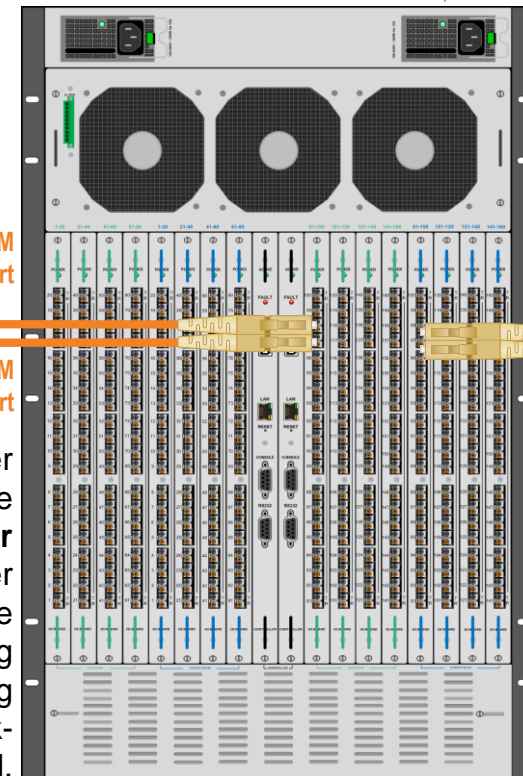


4 From UPSTREAM Transmit Port
To UPSTREAM Receive Port

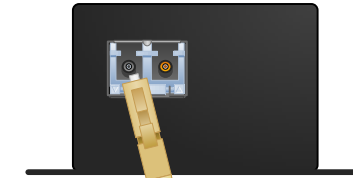
STEP 4: Connect your Fiber Optic Cable from the **SDIXtreme^{3G+} Transmitter OUT Port** to a Router Receive Port or directly to the **Receiver IN Port**, depending on your application. If using RS422, a second, back-channel fiber, is required.

VX160 router KVM Matrix Switch

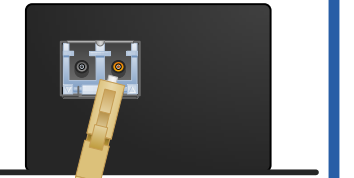
16 Rack Units, 850 Watts



SFP OUT (Transmitter)



SFP IN (Receiver)



Fiber Optic Cable

Multi-Mode fiber can be up to 1000 meters in length.
Single-Mode fiber can be up to 40 kilometers.

From DOWNSTREAM Transmit Port
To DOWNSTREAM Receive Port

STEP 1: Connect your Fiber Optic Cable from the **SDIXtreme^{3G+} Receiver IN Port** to a Router Transmit Port or directly to the **Transmitter OUT Port**, depending on your application. If using RS422, a second, back-channel fiber, is required.

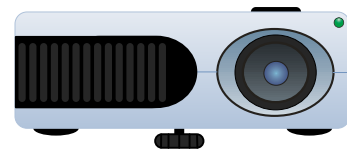
STEP 7: Ensure that the 3G, SD or HD LEDs are illuminated (depending on your signal type). These indicate that the connections are sound.



Destinations

3G, SD, HD SDI Destinations

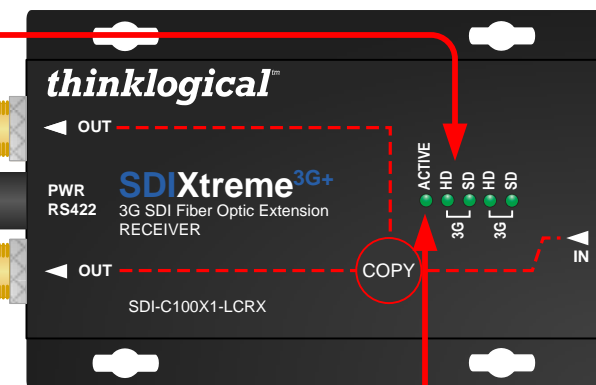
STEP 3: Install your HD, SD or 3G SDI destination devices to the **SDIXtreme^{3G+} Receiver's OUT Ports**. If using RS422, connect your device to the Receiver's RS422 port (located directly below the Power Connector).



5VDC (PWR-000051-R)

2

STEP 2: Install the provided +5VDC power supply to the **SDIXtreme^{3G+} Receiver** and plug it into a standard AC source. Ensure that the **ACTIVE** LED on the Receiver comes on.



SDIXtreme3G+_Single_VX160_Quick_Start_Rev_A

thinklogical[™]

PHONE: 1-800-291-3211
WEBSITE: www.thinklogical.com
EMAIL: support@thinklogical.com

Visit us online at www.thinklogical.com for more product information, current updates and the complete line of Thinklogical[™] products.

Copyright © 2010. All rights reserved. Printed in the U.S.A. All trademarks and service marks are the property of their respective owners.