

POWERFUL CONTROL AND MANAGEMENT SOLUTION FOR THINKLOGICAL INSTALLATIONS

DEPLOY - MONITOR - MANAGE - OPTIMIZE

Thinklogical's System Management Portfolio 3 (SMP3) is a package of specialized and fully integrated hardware and software modules that provides powerful configuration, remote management, and maintenance capabilities, making it easier for users to set up, operate and update Thinklogical video distribution and KVM extension and switching systems of any size.

The intuitive graphical user interface enables fast set-up and control of each source, destination, matrix switch, user and tag in the system, with no custom programming required. Tabs along the bottom and top of the screen allow users to navigate effortlessly through the features and capabilities of SMP3 with just a click of the mouse.

New in SMP3 is an enhanced, graphical On-Screen Display (OSD), improved Drag and Drop capabilities, resource pooling, and flexible, user-definable Hot Keys. Other SMP features include remote system monitoring and updating for simplified system maintenance, and mouse and keyboard sharing for improved user collaboration.

- Complete system control and management solution
- Simplified installation, operation, and maintenance
- Powerful features that don't require custom programming
- Enhancements based on customer experience and input
- Reduced training and increased user efficiency and productivity
- Runs on SMP2 hardware (Appliance, Module, Client)
- SMP Integrated Client Transmitter option available for higher performance

SMP3 from Thinklogical improves overall system performance and value by reducing support effort, lowering total cost of ownership, enhancing productivity, and maximizing system uptime.

SMP3 FEATURES

OSD - On Screen Display

Operators now have access to an intuitive Drag and Drop screen that mimics room and desk layouts. The On-Screen Display provides a graphical representation of the user's specific destination, i.e., number of monitors and available sources. The Drag and Drop, Connect and COMBI pages are now all available to be configured.

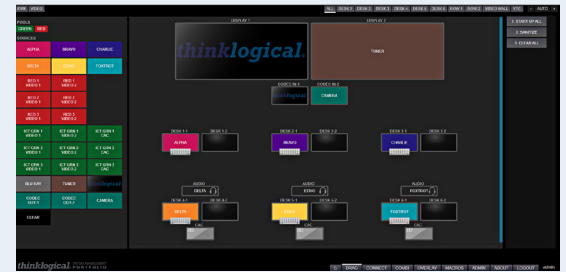
- Graphical interface vs. tabular format
- More intuitive
- Accurate graphical depiction of system deployment
- Greatly reduced training
- More efficient operations
- Asset management capabilities

DRAG - Drag and Drop

The graphical Drag and Drop interface makes it easy for users to visualize their room layouts onscreen and switch between Sources and Destinations by simply moving an icon. As room configurations evolve over time, icons representing Sources and Destinations can be added or removed from the layout as required, making it simple to adapt to changing requirements without moving a single cable or wire. Features include:

- Hierarchical Drag and Drop workflow
- Zoom (+, -, 100%) and Auto Zoom with TAGS / filters
- EZ View: automatically resizes and "snugs" selected view to fit screen
- Levels: change security levels by room or destination with one mouse click

EXAMPLE DRAG AND DROP



PRODUCT FEATURES

- User friendly; no complex programming required
- Faster implementation and simplified maintenance
- Spreadsheet-based system setup
- Graphical drag and drop on-screen display
- Designed for increased productivity and efficiency
- Improved resource pooling for reduced hardware and software costs
- Increased application security
- Touch panel interface for easy operation
- Supports large installations

Pooling

Reduce IT hardware and software costs with resource pooling. Sources such as computers or VTC codecs can be allocated to users on an as-needed basis, with a check in and check out process managed by SMP. This use of a shared pool of resources reduces the need for a dedicated computer, multiplied by every classification or application, for every operator requiring access.

- User can “reserve” a source from pool: no others can access at that time
- Return source to pool after use
- System messages reminder to log out of source prior to return
- Inoperable source (“sick” member) can be flagged and sidelined in pool

Configuration

Intuitive, spreadsheet-based graphical user interface enables faster set-up and simplifies defining users, groups, stations and macros. Includes system management tools for managing redundant switch systems, enabling automatic configuration synchronization. It also provides users with premium tie-line management for bidirectional tie lines, with no restrictions for video path direction over tie lines.

- Spreadsheet-Based Data Entry
- Easy to Set Up and Use
- Easy to Create and Modify Sources and Destinations

Custom Hot Keys & Collaboration

The Hot-Key Manager provides control access from workstations, granting any authorized receiver on the matrix the ability to make a switch. Users define a set of keystrokes to deliver routing control to the desktop, all managed through an easy-to-understand on-screen display. With a simple keystroke or movement of the mouse, multiple users in different locations can easily exchange a single source’s keyboard and mouse to more efficiently collaborate and share resources.

API

Enables control of SMP via integration with third party AV control systems.

Remote System Monitoring

System diagnostics, remote monitoring and software updating capabilities for Thinklogical system administration. SMP monitors the connection and system hardware and software, providing various details such as product type, serial number, power supply status, board temperature, optical module status DDC mode, and software version, among other parameters. The included System Update software allows users to remotely update their KVM system hardware over a fiber connection up to 80 kilometers (50 miles) away.

Text Overlay

Provides a customized display capability to identify a source more easily, with configurable text overlay size, color, and positioning.

Intuitive Mouse Control

Seamless, instant, screen selection by just moving the mouse from screen to screen allows for intuitive access to multiple independent computer sources without manual switching or interrupting workflow. A user’s mouse can now control all available displays as if they were a single virtual desktop. The mouse seamlessly transitions from one display to the next, providing instant access to and control of the new display’s source computer, keyboard, and audio without manual switching. Users with multiple displays on their workstation connected to different computers can now control all with a single keyboard and mouse without interrupting their workflow increasing efficiency and productivity.

- Seamless, instant switching with intuitive control
- Operate multiple displays and computers with single keyboard and mouse
- Increased user efficiency and productivity

Touch Panels: 7” and 10”

Thinklogical Touch Panels support seamless integration with SMP to facilitate control of Thinklogical Matrix Switches. The touch panels function as simple web-based clients that display a customizable graphical interface that is provided by an SMP webserver. The touch panel operates on a closed, isolated network in kiosk mode to limit access to only the SMP webserver.

- Auto size images
- Screen refresh
- On-screen keyboard
- Zoom enhancements
- Asset management

