

PURPOSE-BUILT FIBER HARNESES AND CABLE MANAGEMENT FOR THINKLOGICAL MATRIX SWITCHES

THINKLOGICAL MATRIX SWITCHES

Thinklogical offers the market's widest range of high-performance video and KVM matrix switches, scalable from 12 to 1280 ports. Our switches use an uncompressed bandwidth architecture, providing non-blocking switching of video, audio and computer peripheral signals over multi-mode or single mode fiber optic cable.

IMPROVE CABLE MANAGEMENT FOR THINKLOGICAL MATRIX SWITCHES

Simplify fiber installation, configuration and maintenance to and from Thinklogical Matrix Switches with new Thinklogical Fiber Harnesses. These purpose-built fiber harnesses are the result of a design collaboration between Thinklogical and Belden, a world leader in cabling and connectivity solutions.

A perfect match for Thinklogical Matrix Switch I/O cards, the harnesses support clean, streamlined cable bays for reliable operation. Save time by pulling one Thinklogical Fiber Harness instead of managing bundles of loose cables. The harnesses are designed with enough slack to enable easy removal and swapping of the switch I/O cards. Completely configurable, the solution can be ordered to meet your specifications and requirements from fiber and connector type to leg quantity and length.

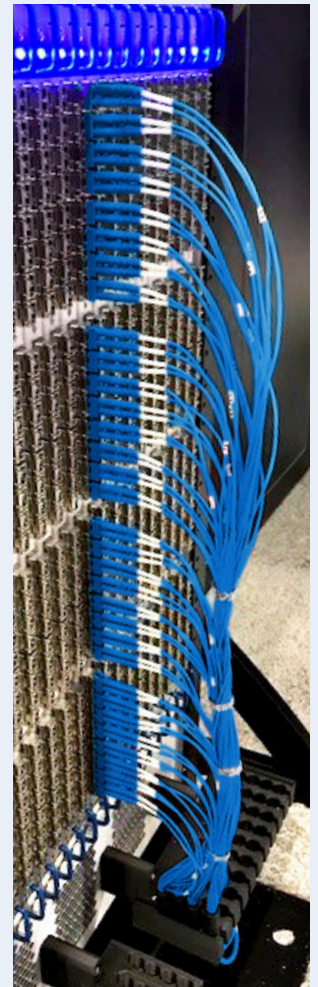
Also available are horizontal cable managers that are optimized for use with the Thinklogical Fiber Harnesses.

HORIZONTAL CABLE MANAGER FOR THINKLOGICAL FIBER HARNESES



EXAMPLE SHOWN: TLX1280 CABLE MANAGER (TOP ROUTING)

SINGLE THINKLOGICAL FIBER HARNESS FOR SWITCH I/O CARD



EXAMPLE SHOWN:
TLX1280 FIBER HARNESS
(BOTTOM ROUTING)

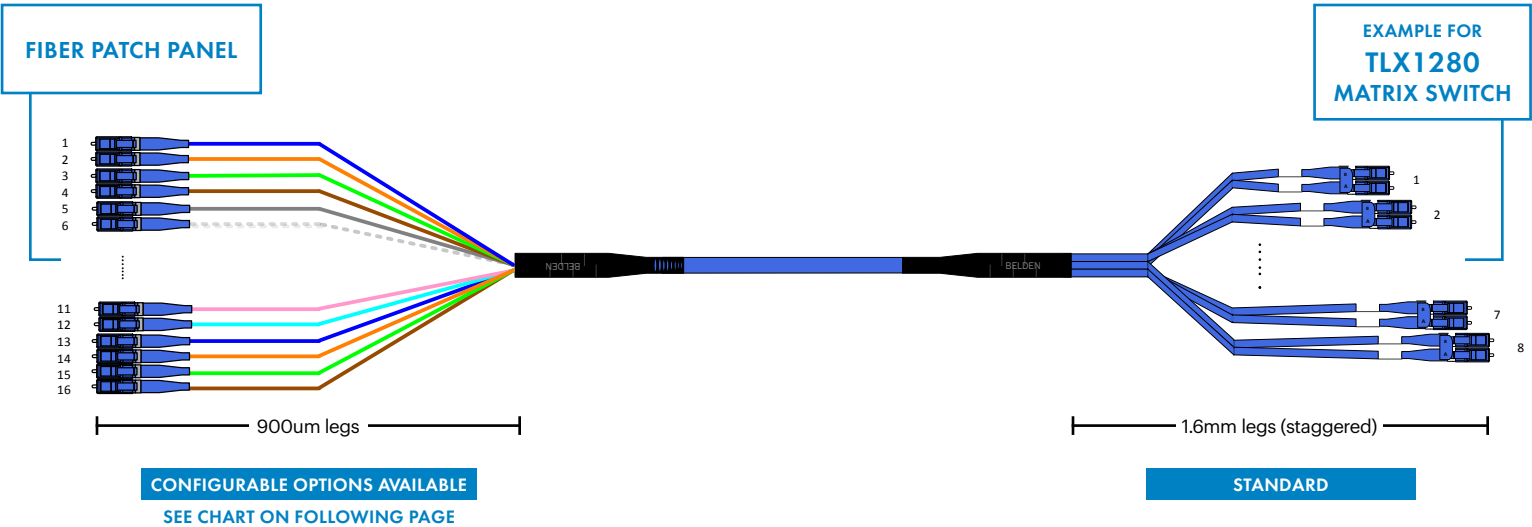
FEATURES

- Pre-configured and pre-terminated staggering legs to exact specifications of switches
- Flexible options to meet solution requirements: connectors, leg lengths, jacket color, etc
- Completely configurable: choose built to order or standard kits
- Modular design simplifies switch I/O card maintenance and future expansion
- Lighter and smaller transitions for easy attachment points using horizontal cable manager
- For VX80, VX320, VX640, and TLX80, TLX160, TLX320, TLX640, TLX1280 Matrix Switches

BENEFITS

- Significantly reduces installation and fiber-connection configuration time and effort
- Reduce tie wraps and eliminate slack for a tidy installation
- Ensure uptime and reduce disruption when moving or replacing hot-swappable switch I/O cards
- Maximize routing flexibility and reduce cable congestion
- Simplify assembly attachment points, multi-port patching and pulling eye removal with smaller, lighter transitions

				TO FILL ONE SWITCH I/O CARD		
MATRIX SWITCH	NUMBER OF CARDS	PORTS PER CARD	FIBERS PER CARD	NUMBER OF TRUNKS	ASSEMBLY FIBER COUNT	LOCATION
TLX1280	40	32	64	4	16	TOP & BOTTOM
TLX640 / VX640	32	20	40	2	20	TOP & BOTTOM
TLX320 / VX320	20	16	32	2	16	BOTTOM
TLX160	16	10	20	1	20	BOTTOM
TLX80 / VX80	16	5	10	1	10	BOTTOM



ORDERING INFORMATION (STANDARD CONFIGURATIONS)			
PART NUMBER	FIBER HARNESS KIT FOR THINKLOGICAL MATRIX SWITCHES	PART NUMBER	HORIZONTAL CABLE MANAGER FOR MATRIX SWITCHES
AX109276	FX Harness Kit, TLX1280 (Top Routing), OM4, 4 x Trunks (To fill one Switch I/O Card), LC Duplex (1.6 mm x Staggered Legs) - LC Simplex (900 μm x 1.0 m x In-line Legs), ONFP, 10 m, Blue Jacket	TLHM 1T	Horizontal Cable Manager for TLX1280, Top Routing
AX109281	FX Harness Kit, TLX1280 (Bottom Routing), OM4, 4 x Trunks (To fill one Switch I/O Card), LC Duplex (1.6 mm x Staggered Legs) - LC Simplex (900 μm x 1.0 m x In-line Legs), ONFP, 10 m, Blue Jacket	TLHM 1B	Horizontal Cable Manager for TLX1280, Bottom Routing
AX109286	FX Harness Kit, TLX640/VX640 (Top Routing), OM4, 2 x Trunks (To fill one Switch I/O Card), LC Duplex (1.6 mm x Staggered Legs) - LC Simplex (900 μm x 1.0 m x In-line Legs), ONFP, 10 m, Blue Jacket	TLHM 2T	Horizontal Cable Manager for TLX640/VX640, Top Routing
AX109289	FX Harness Kit, TLX640/VX640 (Bottom Routing), OM4, 2 x Trunks (To fill one Switch I/O Card), LC Duplex (1.6 mm x Staggered Legs) - LC Simplex (900 μm x 1.0 m x In-line Legs), ONFP, 10 m, Blue Jacket	TLHM 2B	Horizontal Cable Manager for TLX640/VX640, Bottom Routing
AX109292	FX Harness Kit, TLX320/VX320 (Bottom Routing), OM4, 2 x Trunks (To fill one Switch I/O Card), LC Duplex (1.6 mm x Staggered Legs) - LC Simplex (900 μm x 1.0 m x In-line Legs), ONFP, 10 m, Blue Jacket	TLHM 3B	Horizontal Cable Manager for TLX320/VX320, Bottom Routing
AX109295	FX Harness Kit, TLX160 (Bottom Routing), OM4, 01-10 Ports (01-20 Fibers), LC Duplex (1.6 mm x Staggered Legs) - LC Simplex (900 μm x 1.0 m x In-line Legs), ONFP, 10 m, Blue Jacket	TLHM 4B	Horizontal Cable Manager for TLX160, Bottom Routing
AX109296	FX Harness Kit, TLX80/VX80 (Bottom Routing), OM4, 01-05 Ports (01-10 Fibers), LC Duplex (1.6 mm x Staggered Legs) - LC Simplex (900 μm x 1.0 m x In-line Legs), ONFP, 10 m, Blue Jacket	TLHM 5B	Horizontal Cable Manager for TLX80/VX80, Bottom Routing

MATRIX SWITCH FIBER HARNESS ORDERING INFORMATION OPTIONAL CONFIGURATIONS

ORDERING INFORMATION (OPTIONAL CONFIGURATIONS)

TL TRUNKS	FIBER TYPE	SWITCH TYPE	SWITCH SIDE A PORT NUMBERS	SWITCH SIDE A CONNECTORS	SWITCH SIDE A FAN-OUT & DIRECTION	OTHER SIDE B CONNECTORS	OTHER SIDE B FAN-OUT CONST x LENGTH	LENGTH & UNIT OF MEASURE
TL	X	X	X	XX	X	XX	X	XXXX
GLOBAL	3 OM3 4 OM4 EV 9 OM4 AQ S OS2	1 TLX1280 2 TLX640/ VX640 3 TLX320/ VX320 4 TLX160 5 TLX80/ VX80	TLX1280 1 4 x harnesses (Kit) 01-32 port (01-64 fibers) A 01-08 ports (01-16 fibers) B 09-16 ports (17-32 fibers) C 17-24 ports (33-48 fibers) D 25-32 ports (49-64 fibers) TLX640/VX640 2 2 x harnesses (Kit) O 1-20 ports (01-40 fibers) A 01-10 ports (01-20 fibers) B 11-20 ports (21-40 fibers) TLX320/VX320 3 2 x harnesses (Kit) 01-16 ports (01-32 fibers) A 01-08 ports (01-16 fibers) B 09-16 ports (17-32 fibers) TLX160 A 01-10 ports (01-20 fibers) TLX80/VX80 A 01-05 ports (01-10 fibers)	LD LC Duplex LA LC/APC Duplex LU LC Duplex UHD Uni.	TLX1280 TLX640/VX640 T From Top B From Bottom TLX320/VX320 TLX160 TLX80/VX80 B From Bottom	LD LC Duplex LC LC Simplex LM Mini-LC Duplex LA LC/APC Duplex LB LC/APC Simplex LI LC Simplex UHD LU LC Duplex UHD Uni. LF LC/APC Simplex UHD SD SC Duplex SC SC Simplex SA SC/APC Duplex SB SC/APC Simplex ST ST 4M MPO-12 Base 8 (M) SR4 4F MPO-12 Base 8 (F) SR4	A 900 μm x 0.5 m x In-Line B 900 μm x 1.0 m x In-Line C 900 μm x 1.5 m x In-Line D 900 μm x 2.0 m x In-Line E Jacketed x 0.5 m x In-Line F Jacketed x 1.0 m x In-Line G Jacketed x 1.5 m x In-Line H Jacketed x 2.0 m x In-Line	003M to 500M M Meters *use M as decimal **Fan out lengths limit some configurations to 005M minimum overall lengths.

EXAMPLE OPTIONAL CONFIGURATION PART NUMBER

TL	3	1	A	LD	T	LD	A	030M
----	---	---	---	----	---	----	---	------

Fiber Harness, TLX1280 (Top Routing), OM3, 01-08 ports (01-16 fibers), LC Duplex (1.6 mm x Staggered Legs) – LC Duplex (900 μm x 0.5 m x In-Line Legs), ONFP, 30M, Aqua Jacket and Connectors

FEATURES

- Fan-out Construction for Jacketed legs:
LC/SC/ST → 1.6mm
MPO → 3mm (Mini-D)
- Fire Rating: PLENUM (OFNP)
- Protective sock installed at both ends
- Pulling eye at Outside End is installed for assemblies equal or longer than 5 m
- Connector Colors: OM3 – Aqua, OM4 - Erika Violet, OS2/APC – Green
- Jacket Colors: OM3 – Aqua, OM4 – Erika Violet, OS2 – Yellow